



TRUFIG

212 Avenida Fabricante
San Clemente, CA 92672
(949) 492 - 7777

TRUFIG and the TRUFIG Logo
are trademarks of Dana In-
novations. © 2012 Dana In-
novations. All rights reserved.

APPLICATION NOTE

E-01

Tile Install

Overview:

Tile installs fall into two different categories: 1) small tile, and 2) large tile.

1) Small tile (less than about 10" square) can be installed by using a gypsum mounting platform with a tile dam accessory. Depending on the thickness of the tile, plaster shims may also be needed.

2) Large tiles (more than about 10" square) can be installed using a regular solid surface mounting platform - no tile dam is needed.

The decision of which category is best for the install will ultimately come down to the installers preference, but a test to help determine which install method to use is to look at the size of the tile and the position of the opening within the tile. If the tile is small and the device opening will intersect with a grout line, then the best install method will be the small tile install method. If the tile is large and intersecting with a grout line can be avoided, then the best method is the large tile install method.

Below is a complete list of TRUFIG materials needed and detailed summary of how to install a TRUFIG platform using either method.

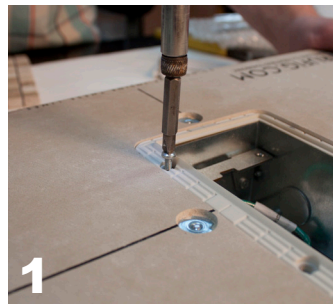
Small Tile Install:

TRUFIG parts needed:

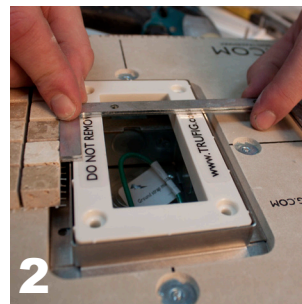
- TRUFIG Gypsum Mounting Platform (single or double gang, 1/2" or 5/8")
- TRUFIG Tile Dam (single or double gang)
- Plaster Shims (single or double gang) - needed if tile is more than 3/16" thick

Installation Instructions:

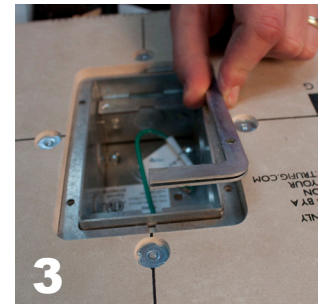
Note: small tile install is applicable to 1G and 2G platforms only because these are the only sizes where a mud dam is currently available.



Remove the mud dam from the mounting platform



Lay in tile dam with plastic fixture and determine amount of shims needed. Tile dam is best fitted slightly lower than the tile height. Remember to compensate for mud behind tile.



Install plaster shims



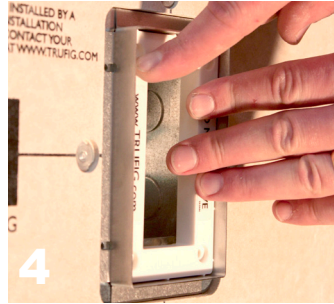
TRUFIG

212 Avenida Fabricante
San Clemente, CA 92672
(949) 492 - 7777

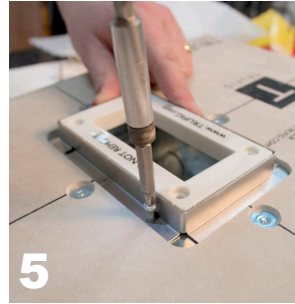
TRUFIG and the TRUFIG Logo are trademarks of Dana Innovations. © 2012 Dana Innovations. All rights reserved.

APPLICATION NOTE

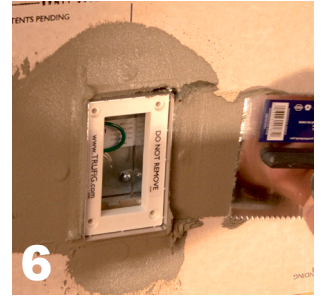
E-01



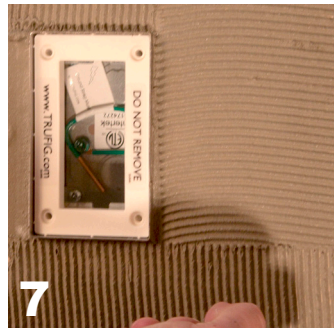
4 Insert the tile dam into the opening. Make sure that the plastic box fixture is pushed all the way in to ensure that the tile dam is centered on the enclosure.



5 Fasten the tile dam using the four mud dam screws. Be sure to use a low torque setting so that the tile dam is not distorted. Also, if longer screws are needed, any standard #6 pan head screw can be used.



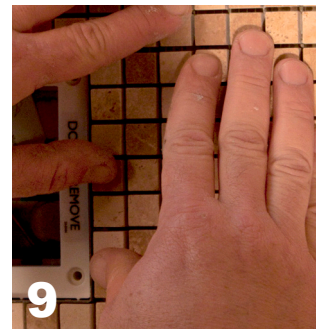
6 Apply mud using standard industry practices being sure to fill the area around the tile dam before applying a notch trial finish.



7 Apply desired notch trial finish



8 Cut tile - grinder or tile saw may be needed to cut individual tiles.



9 Set tile - being mindful of keeping an equal grout line around device.

Once tile is set, grout can be applied using standard industry practices. Be sure to make sure the grout around device remains clean and even.

Large Tile Install:

TRUFIG parts needed:

-TRUFIG Solid Surface Mounting Platform (any SS platform, 1/2" or 5/8")

Installation Instructions:

Install just like a stone install for any other solid surface platform - use epoxy or similar adhesive. See the TRUFIG Install Guide: Solid Surface Install Section under the appropriate size of platform desired, for more details and steps on how to install.